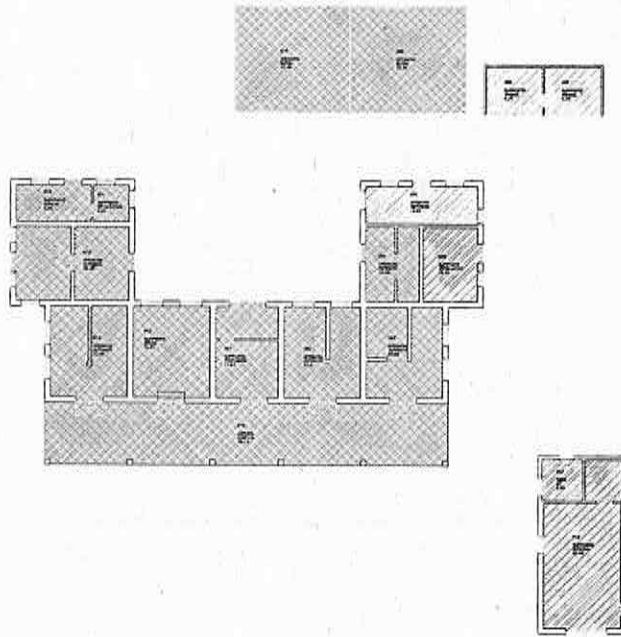


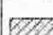


EDI. 718 via Beimelara, 3/3
PIANO TERRA

individuazione superfici come da rilievo dFM
mq. 385,955



Legenda scala 1:200

-  spazi occupati da
AUTC - Area Edilizia e Logistica
mq. 304,302
-  spazi occupati da
associazioni studentesche
mq. 29,523
-  spazi occupati da
associazione studentesca ZeroPuntoZero
mq. 52,130